



# INLAND EMPIRE WATER PARTNERSHIP

## UNDERSTANDING PFAS: IMPACTS ON AND BEYOND OUR WATER SUPPLY

PFAS awareness is increasing among many industries and as we continue to deepen our understanding of these “forever chemicals,” the Inland Empire Water Partnership will keep you informed every step of the way. Our partnership remains committed to ensuring that you will receive water of exceptional quality, meeting strict drinking water standards set forth by the U.S. Environmental Protection Agency (EPA).

### What are PFAS?

Per- and polyfluoroalkyl substances (PFAS) are more than 12,000 chemicals that persist in the environment due to their chemical structure. As a result, PFAS are often referred to as “forever chemicals.”

Due to their heat and water-resistant properties, these man-made chemicals are used widely in consumer products such as nonstick cookware, personal care products, food packaging and more. While the most common PFAS are no longer manufactured in the U.S., these chemicals are still produced internationally and imported into the country in consumer products; therefore, they can be found in water, soil, air and food.

The full impact of PFAS is still unknown; however, the EPA suggests that exposure to certain PFAS can result in adverse effects on human health. The widespread presence of PFAS in the environment from decades of extensive use highlights the interconnection of our ecosystems and emphasizes the significance of protecting our water resources for which our partnership remains committed.



## Taking Steps for PFAS Removal

While water and wastewater agencies are recipients (passive receivers) of these contaminations, we actively strive to be a part of the solution. We remain committed to scientific-based solutions that minimize and/or eliminate PFAS and provide our customers with clean, affordable water. We continue to invest in research, technology, and treatment system upgrades to remove PFAS, while conducting ongoing testing to ensure water safety.

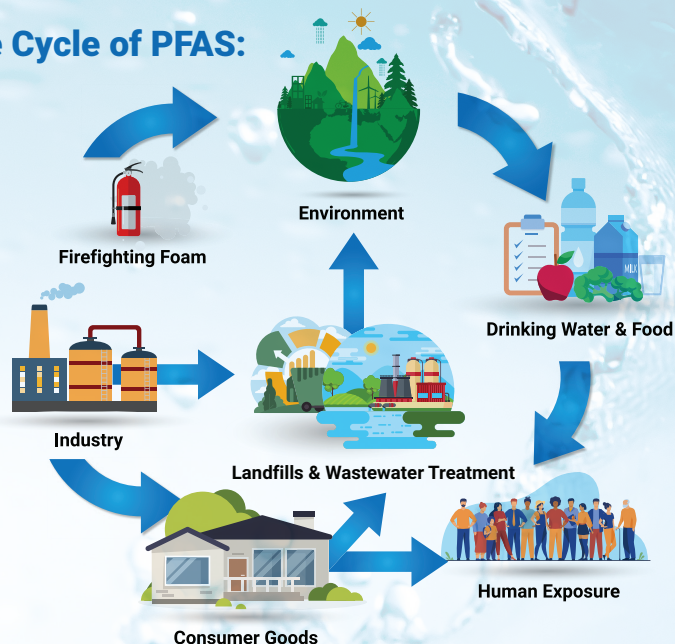
## Protecting Public Health

Our partnership's highest priority is a collective commitment to protecting public health which extends beyond regulatory requirements. We proactively ensure the safety of the communities we serve by maintaining water quality standards, leveraging sophisticated treatment equipment, and continuously testing and monitoring our water. Our water agencies perform an average of 45,000 rigorous tests annually to ensure the highest water quality standards are met when this resource reaches your home in compliance with state and federal guidelines. You can remain confident in the water delivered to your household; it is routinely tested and diligently monitored, adhering to some of the strictest water quality standards in the world.

## Working Together

Awareness is key to preventing PFAS in our water sources and safeguarding our water quality. You too can contribute to a cleaner environment by being mindful consumers and making informed decisions, such as researching the materials used in the products you purchase. PFAS-free materials can include stainless steel, ceramic, cast iron, silicone, bamboo, and natural fibers. However, while these are commonly PFAS-free materials, it is always a good idea to check product labels or contact manufacturers to confirm.

## The Cycle of PFAS:



## Our Commitment:

Addressing PFAS requires collaboration, and our partnership actively seeks cooperative solutions to contribute effectively to resolving the issue. We are engaging with our communities, researchers and experts, media, and elected officials to provide education on PFAS and their impact on our water supply. If you have any questions or concerns about your water quality or PFAS, please reach out to your local water agency, listed below, to further assist you.



### About us:

The Inland Empire Water Partnership (IEWP) consists of four unified water districts – Eastern Municipal Water District, Inland Empire Utilities Agency, San Bernardino Valley Municipal Water District, and Western Water – representing the water resources of 3.4 million Southern Californians and sharing a commitment to regional water solutions.



(951) 928-3777  
publicandgovtaffairs@emwd.org



(909) 993-1935  
acarruthers@ieua.org



(909) 387-9229  
kellym@sbnvmd.com



(951) 571-7104  
outreach@wmwd.com